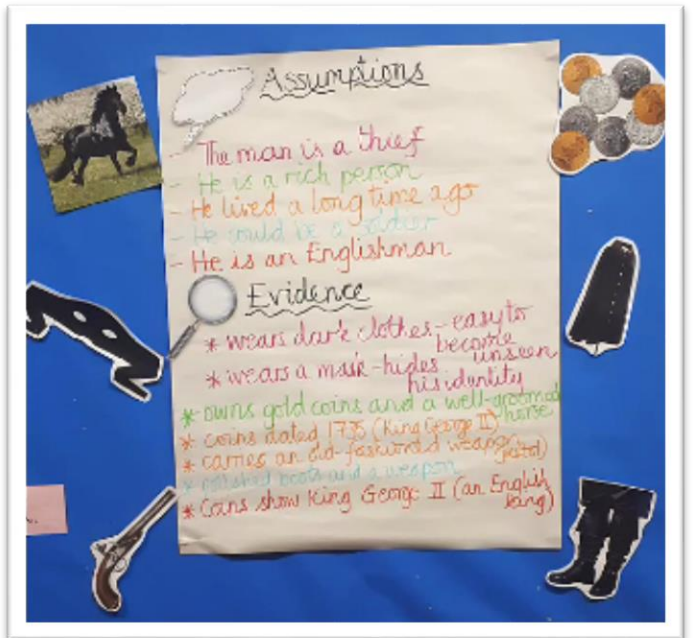


**Friday 23<sup>rd</sup> November**

**Talk Time Homework.**

**Inference – Making assumptions**

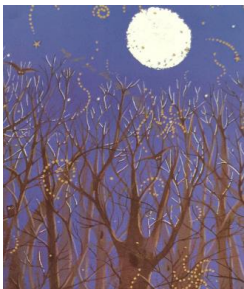
Looking at the pictures below, what assumptions (inferences) can we make about the main character in the book



An example from the story The Highwayman

Please take time to talk with someone at home about what the pictures might suggest about the character and why you think this.

You can display this in any way you would like. Most importantly, spend time with an adult talking about what this character might be like and what evidence you can see that suggests this.



We look forward to looking at your ideas.

This work is also on the school website, should you wish to copy the images.